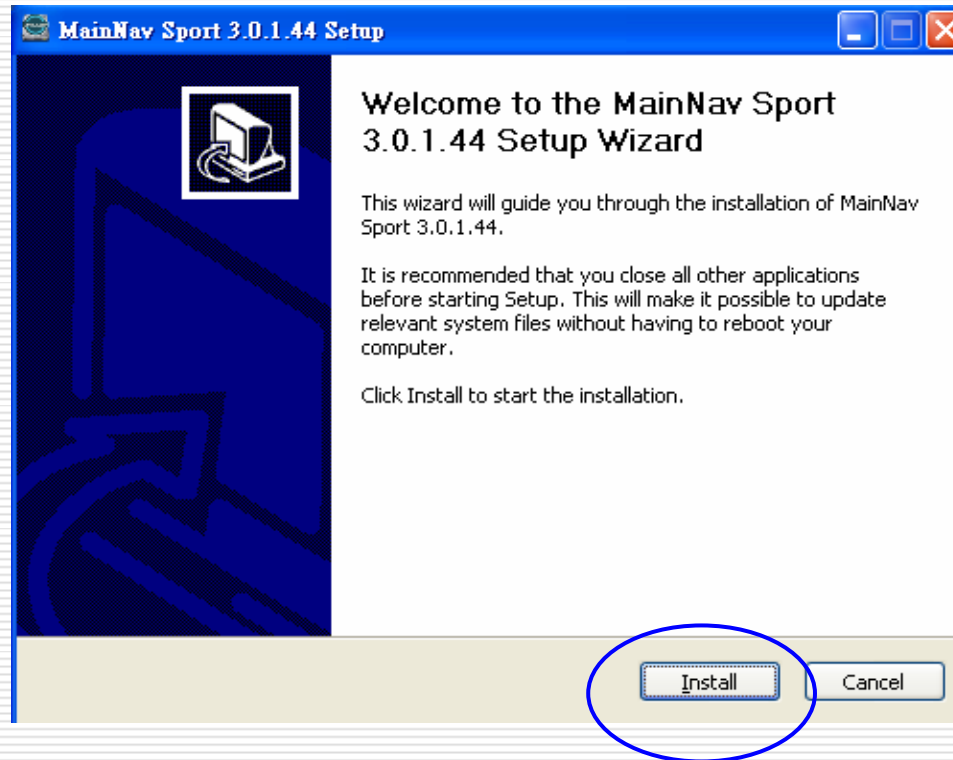


Mainnav Sport application

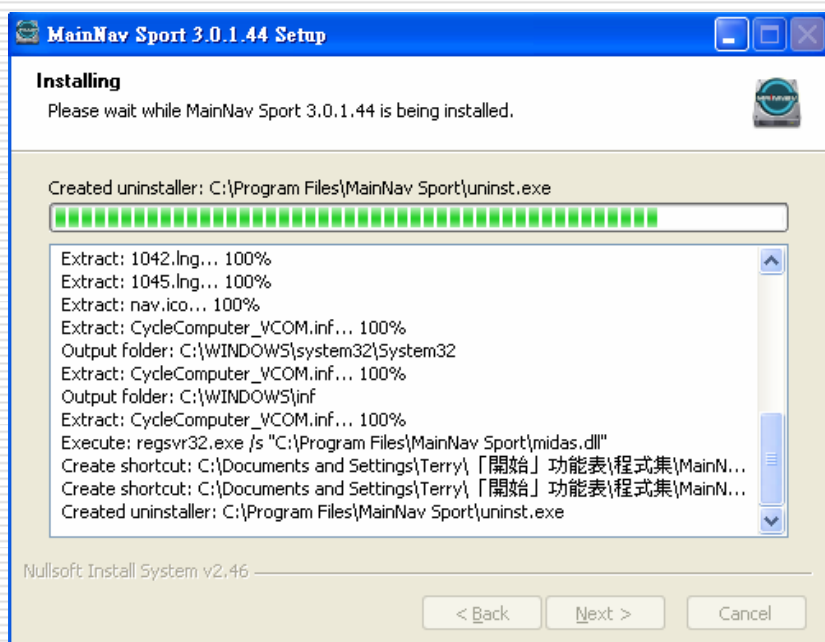
- ◎ calories counter for different Gender, age, sport and
 - ◎ variety of sports categories
 - ◎ Google Map viewing
 - ◎ Upload track to Google Earth
 - ◎ POI to Google Earth
 - ◎ food and sport calendar
 - ◎ Calorie consumption chart
-

Install Mainnav application
Find software in CD -- start to install

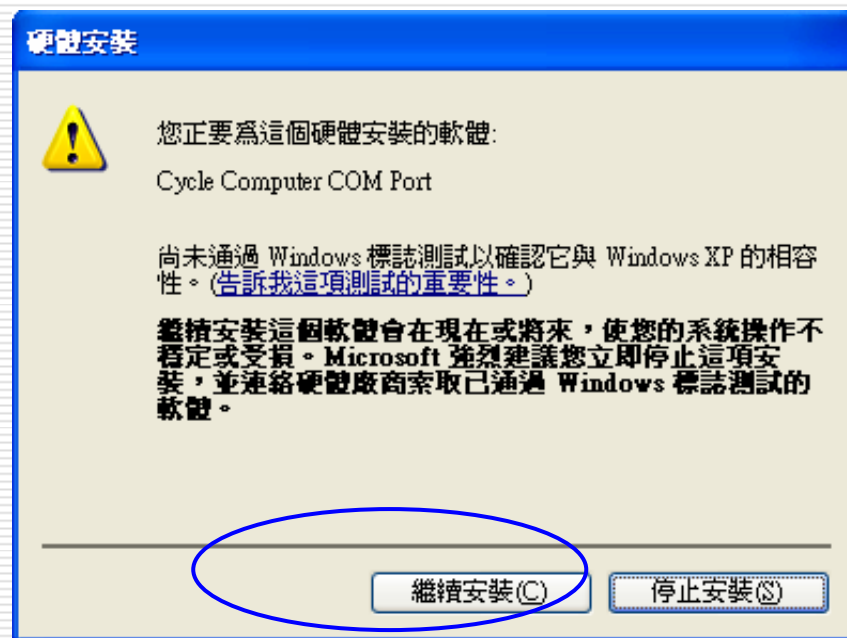
click install



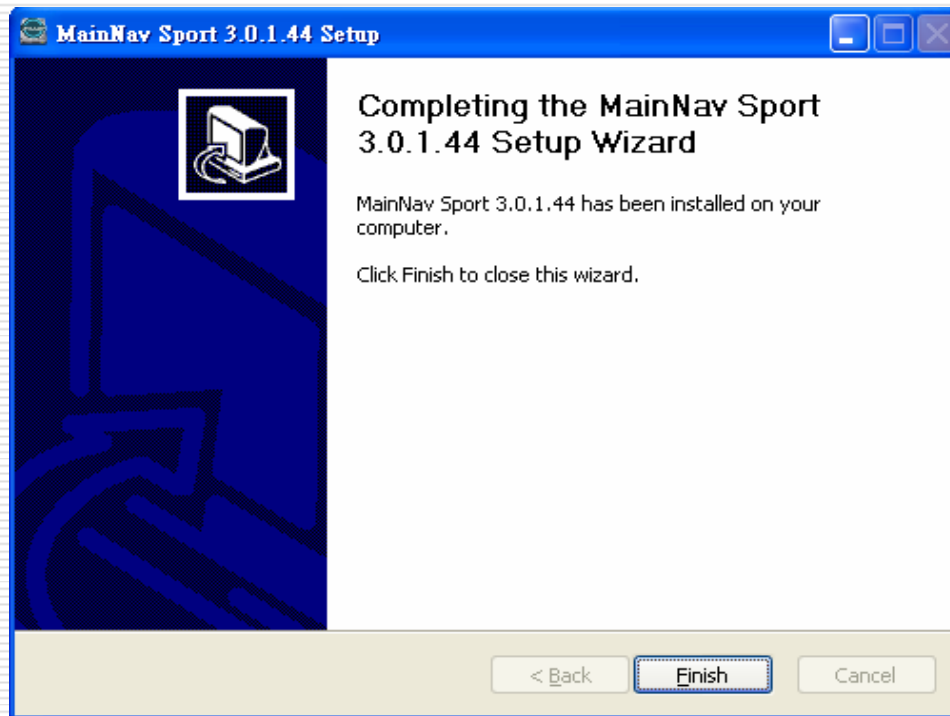
Program processing



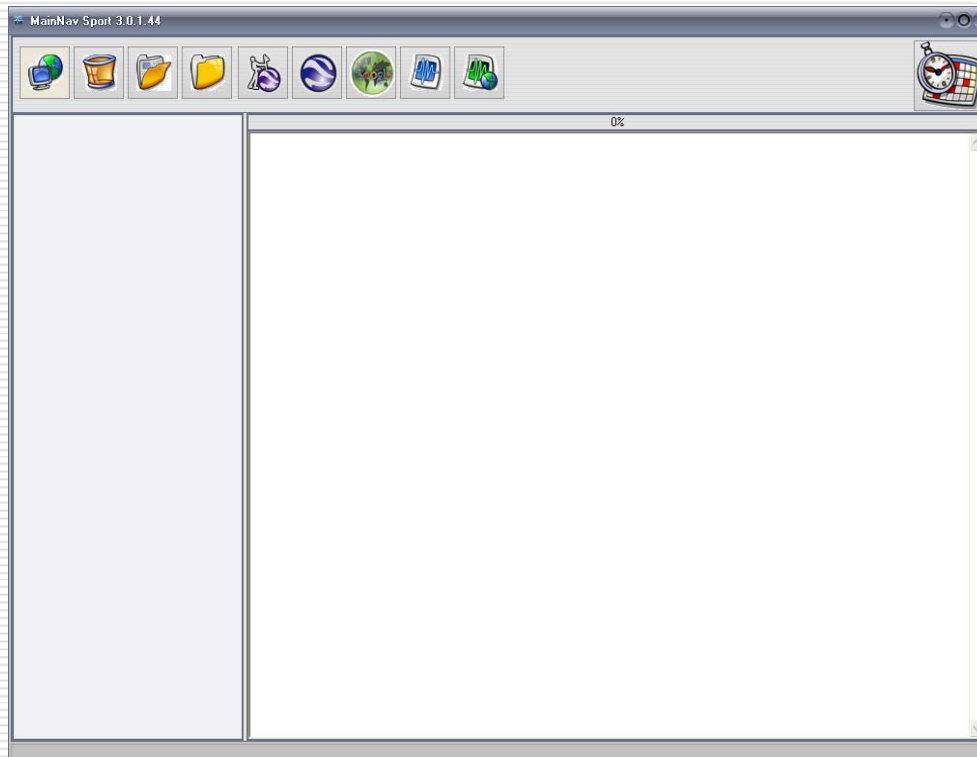
Click continue



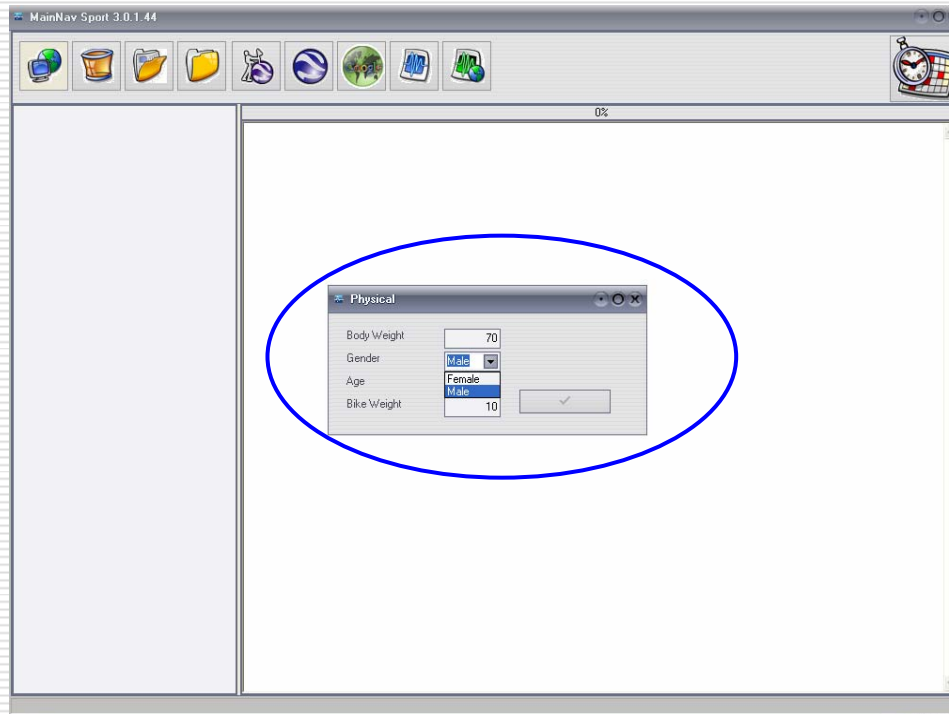
Click finish– finish install, find application in desk .



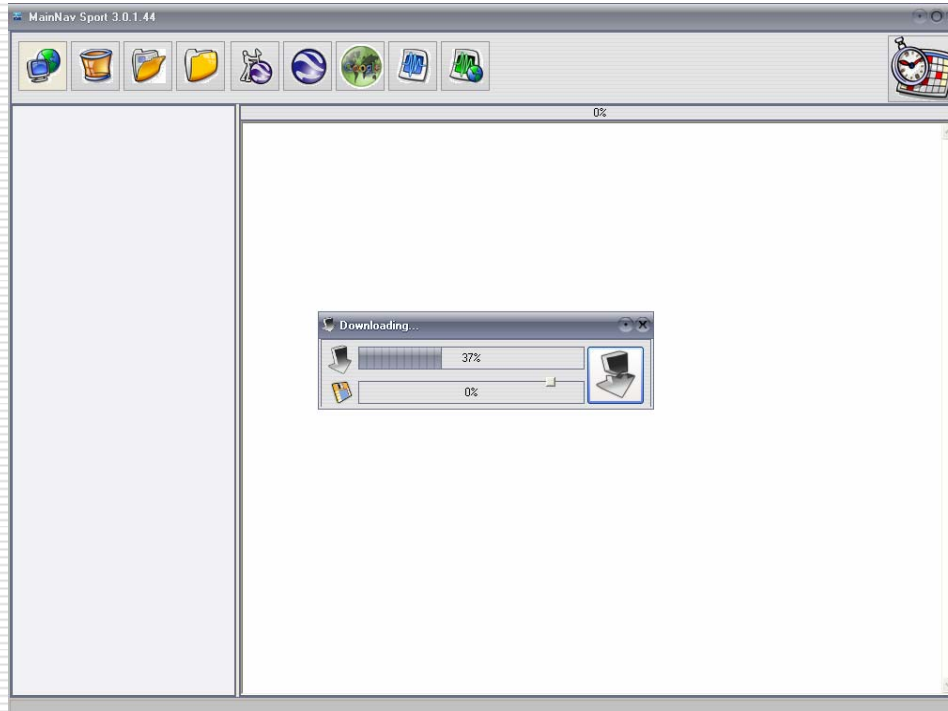
Click mainnav sport



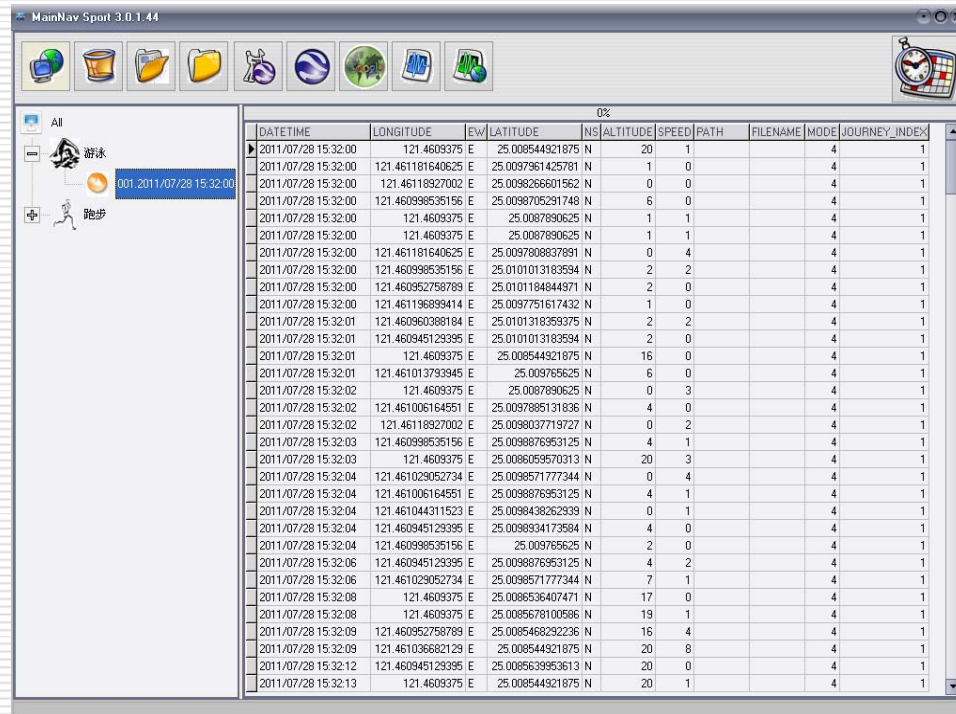
First time use –input Individual parameters



Connect device to PC and click download icon



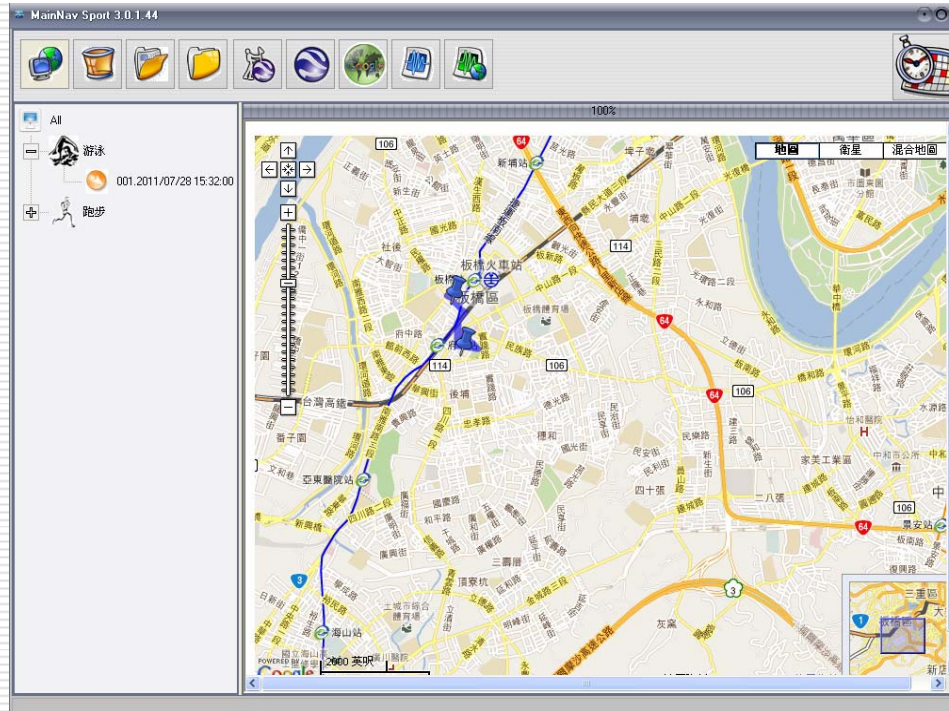
Download finished



The screenshot displays the MainNav Sport 3.0.1.44 application window. The interface includes a toolbar with various icons for navigation and data management. On the left, there is a sidebar with a tree view showing folders for '游泳' (Swimming) and '跑步' (Running). The main area contains a data table with columns for DATETIME, LONGITUDE, EW, LATITUDE, NS, ALTITUDE, SPEED, PATH, FILENAME, MODE, and JOURNEY_INDEX. The table lists multiple entries for swimming and running activities, each with specific coordinates and timestamps.

DATETIME	LONGITUDE	EW	LATITUDE	NS	ALTITUDE	SPEED	PATH	FILENAME	MODE	JOURNEY_INDEX
2011/07/28 15:32:00	121.4609375	E	25.008544921875	N	20	1			4	1
2011/07/28 15:32:00	121.461181640625	E	25.0097961425781	N	1	0			4	1
2011/07/28 15:32:00	121.46118927002	E	25.0098266601562	N	0	0			4	1
2011/07/28 15:32:00	121.460998535156	E	25.0098705291748	N	6	0			4	1
2011/07/28 15:32:00	121.4609375	E	25.0087890625	N	1	1			4	1
2011/07/28 15:32:00	121.4609375	E	25.0087890625	N	1	1			4	1
2011/07/28 15:32:00	121.461181640625	E	25.0097808837891	N	0	4			4	1
2011/07/28 15:32:00	121.460998535156	E	25.0101013183594	N	2	2			4	1
2011/07/28 15:32:00	121.460952758789	E	25.0101184844971	N	2	0			4	1
2011/07/28 15:32:00	121.461196899414	E	25.0097751617432	N	1	0			4	1
2011/07/28 15:32:01	121.460960388184	E	25.0101318359375	N	2	2			4	1
2011/07/28 15:32:01	121.460945129395	E	25.0101013183594	N	2	0			4	1
2011/07/28 15:32:01	121.4609375	E	25.008544921875	N	16	0			4	1
2011/07/28 15:32:01	121.461013793945	E	25.009765625	N	6	0			4	1
2011/07/28 15:32:02	121.4609375	E	25.0087890625	N	0	3			4	1
2011/07/28 15:32:02	121.461006164951	E	25.0097885131836	N	4	0			4	1
2011/07/28 15:32:02	121.46118927002	E	25.0098037719727	N	0	2			4	1
2011/07/28 15:32:03	121.460998535156	E	25.0098876953125	N	4	1			4	1
2011/07/28 15:32:03	121.4609375	E	25.0086059570313	N	20	3			4	1
2011/07/28 15:32:04	121.461029052734	E	25.0098571777344	N	0	4			4	1
2011/07/28 15:32:04	121.461006164951	E	25.0098876953125	N	4	1			4	1
2011/07/28 15:32:04	121.461044311523	E	25.0098438262939	N	0	1			4	1
2011/07/28 15:32:04	121.460945129395	E	25.0098334173594	N	4	0			4	1
2011/07/28 15:32:04	121.460998535156	E	25.009765625	N	2	0			4	1
2011/07/28 15:32:06	121.460945129395	E	25.0098876953125	N	4	2			4	1
2011/07/28 15:32:06	121.461029052734	E	25.0098571777344	N	7	1			4	1
2011/07/28 15:32:08	121.4609375	E	25.0086536407471	N	17	0			4	1
2011/07/28 15:32:08	121.4609375	E	25.0085678100586	N	19	1			4	1
2011/07/28 15:32:09	121.460952758789	E	25.0085468292236	N	16	4			4	1
2011/07/28 15:32:09	121.461036682129	E	25.008544921875	N	20	8			4	1
2011/07/28 15:32:12	121.460945129395	E	25.0085639953613	N	20	0			4	1
2011/07/28 15:32:13	121.4609375	E	25.008544921875	N	20	1			4	1

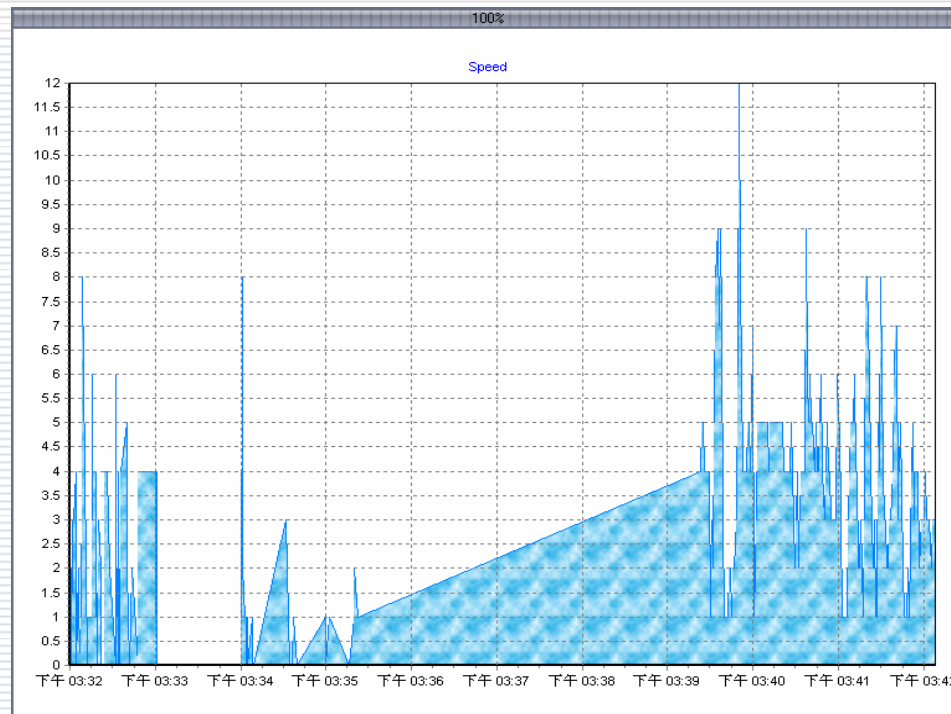
Click Map icon to view Google Map



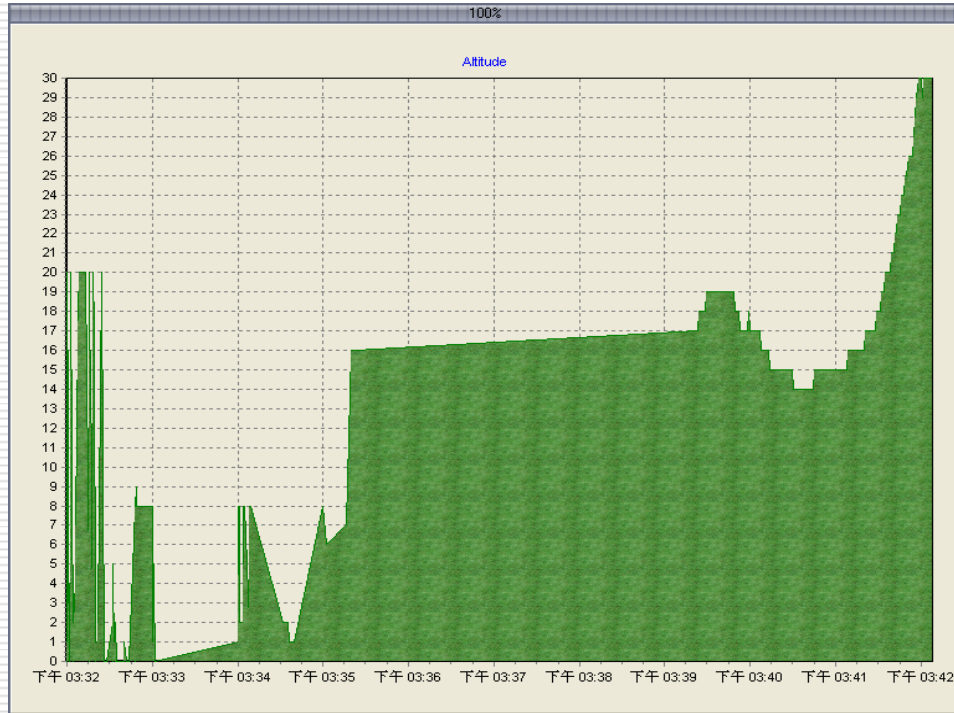
Sport categories – view different sport item in herer



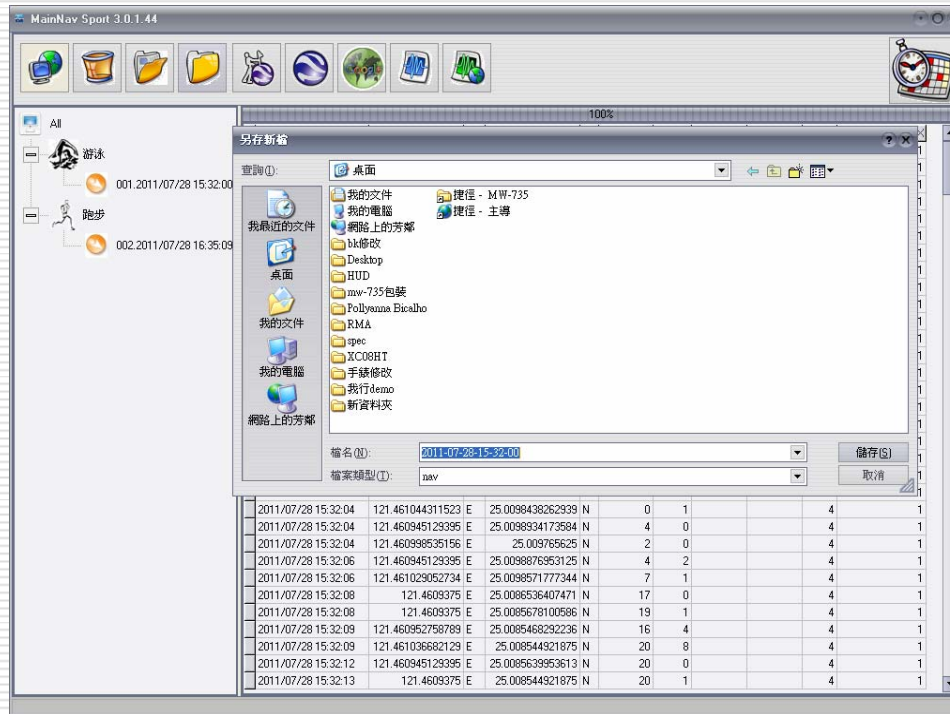
Time /speed chart



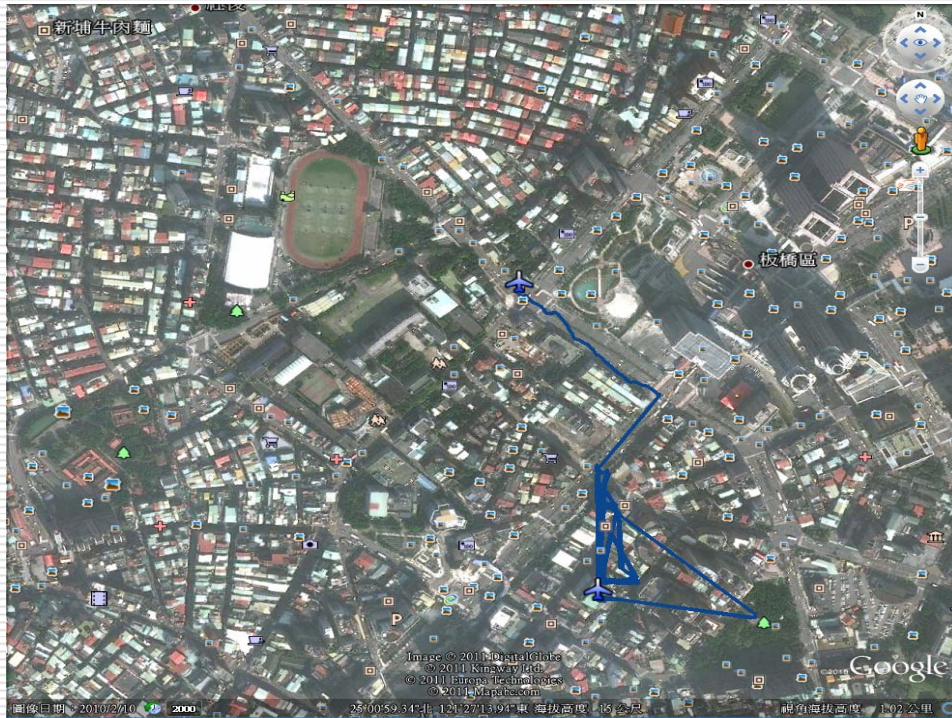
time/speed chart



Save file to computer, file name is according saving date .
Also, user could change file name



Click Google earth icon to upload Google earth



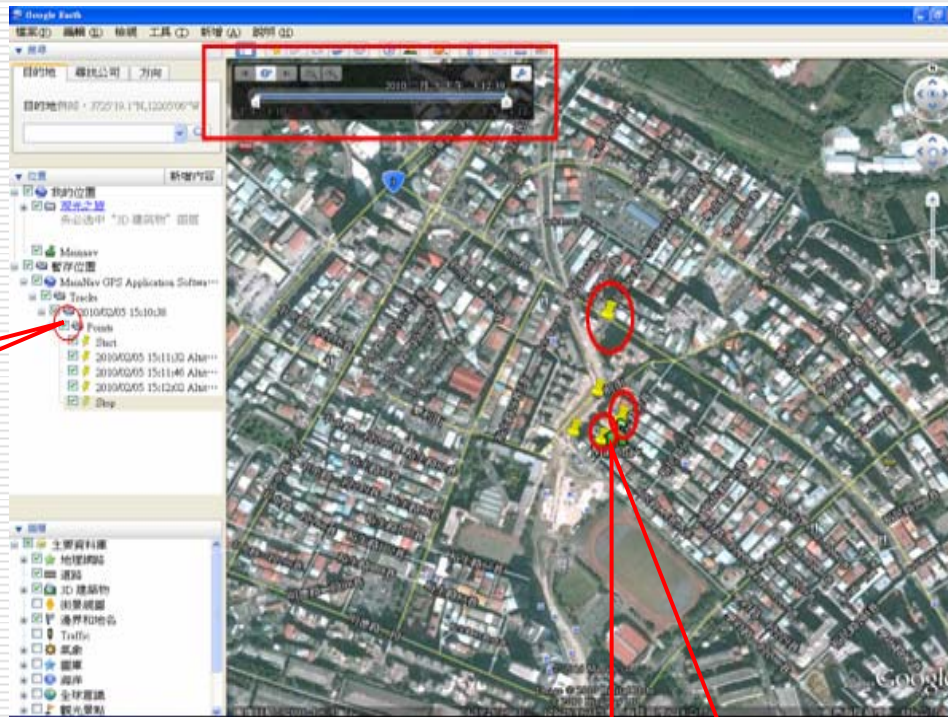
Download POI to computer-- click POI icon



100%

DATE/TIME	LONGITUDE	EW	LATITUDE	NS	ALTITUDE	SPEED	PATH	FILENAME	MODE	JOURNEY_INDEX
2011/07/28 15:32:00	121.461191640625	E	25.0097961425781	N	1	0			4	1
2011/07/28 15:32:00	121.460998535156	E	25.0098706291748	N	6	0			4	1
2011/07/28 15:32:00	121.460998535156	E	25.0101013183594	N	2	2			4	1
2011/07/28 15:32:00	121.4609375	E	25.0007890625	N	1	1			4	1
2011/07/28 15:32:00	121.4609375	E	25.008544921875	N	20	1			4	1
2011/07/28 15:32:00	121.46118927002	E	25.0098266601562	N	0	0			4	1
2011/07/28 15:32:00	121.4609375	E	25.0007890625	N	1	1			4	1
2011/07/28 15:32:00	121.461196899414	E	25.0097751617432	N	1	0			4	1
2011/07/28 15:32:00	121.461181640625	E	25.0097800837891	N	0	4			4	1
2011/07/28 15:32:00	121.460962758289	E	25.0101184844971	N	2	0			4	1
2011/07/28 15:32:01	121.461013793945	E	25.009765625	N	6	0			4	1
2011/07/28 15:32:01	121.460945129395	E	25.0101013183594	N	2	0			4	1
2011/07/28 15:32:01	121.4609375	E	25.008544921875	N	16	0			4	1

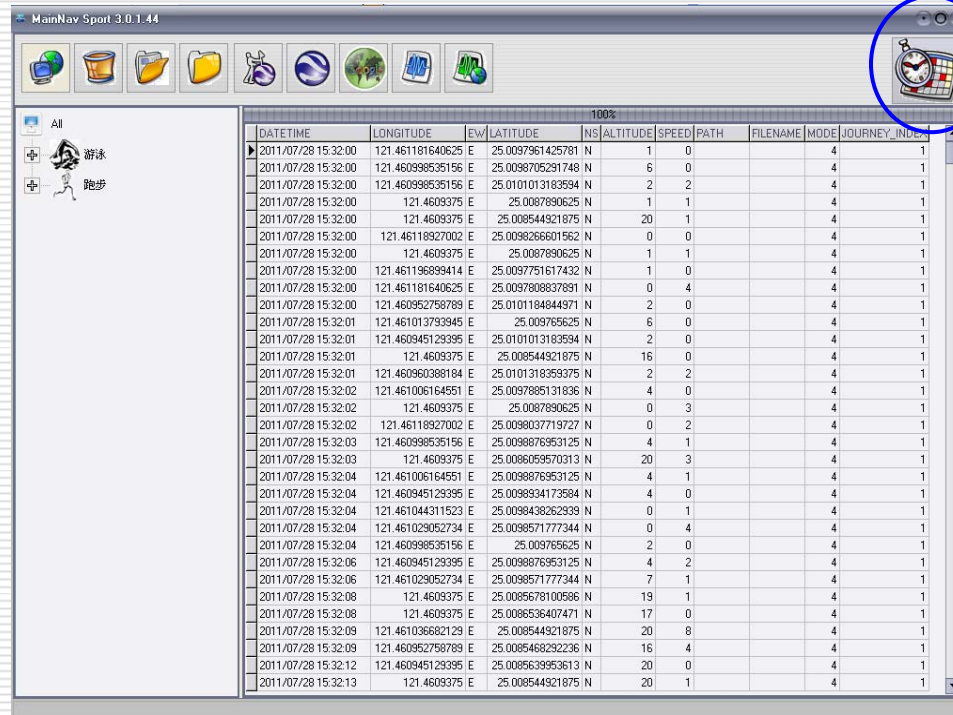
Upload POI to Google Earth



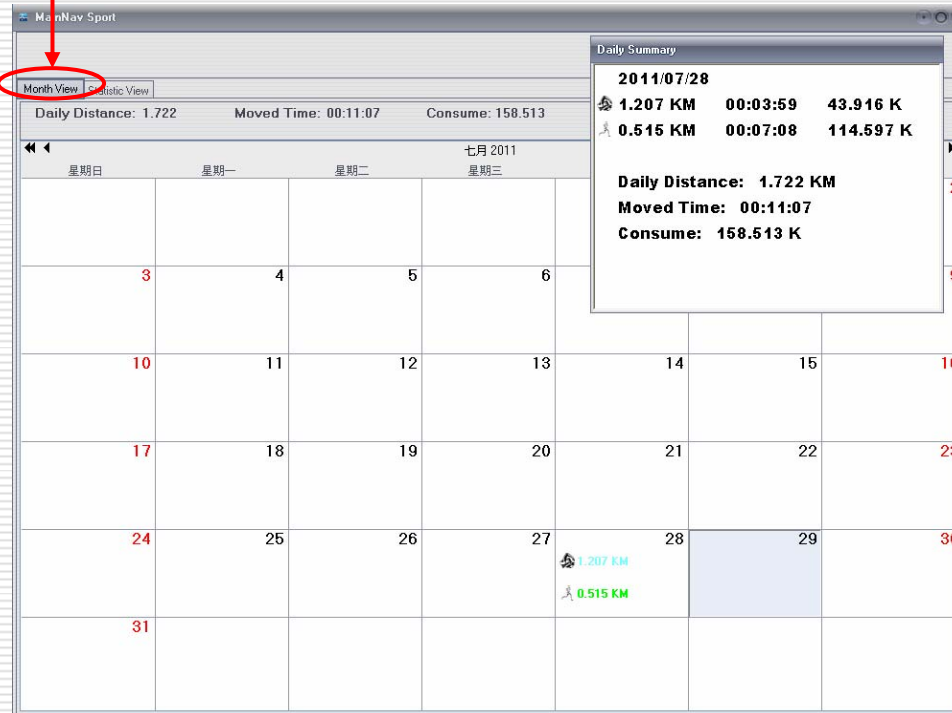
In here Mark
Point

POI upload successfully

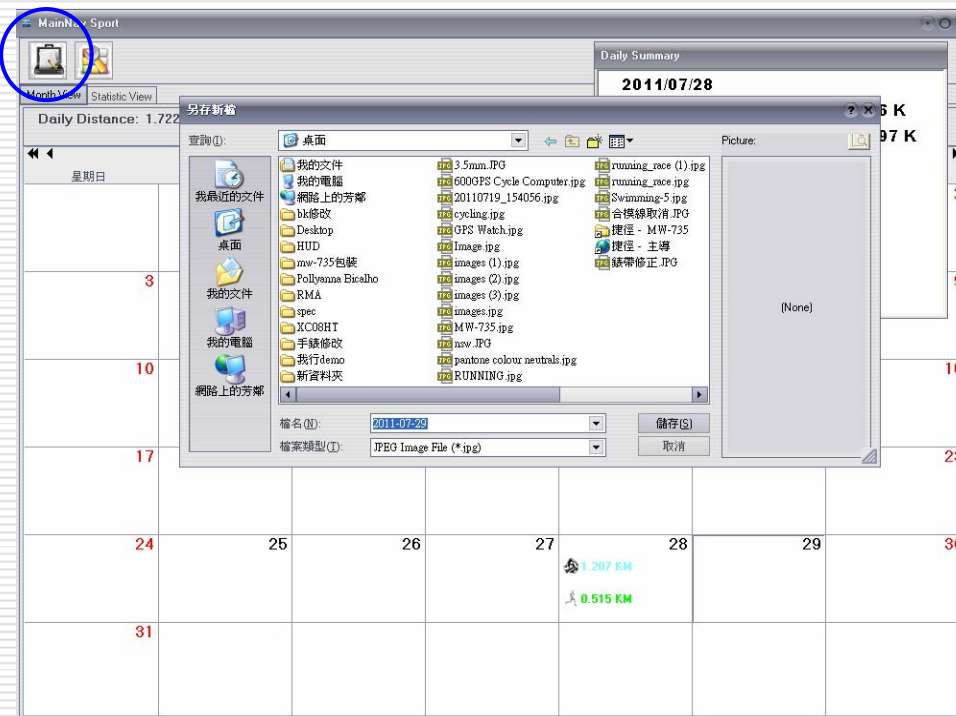
Click training plan function



Check training plan by Month



Click this icon to save training plan



Finished save file –JPG format

七月 2011						
星期日	星期一	星期二	星期三	星期四	星期五	星期六
					1	2
3	4	5	6	7	8	9
10	11	12	13	14	15	16
17	18	19	20	21	22	23
24	25	26	27	28	29	30
31						

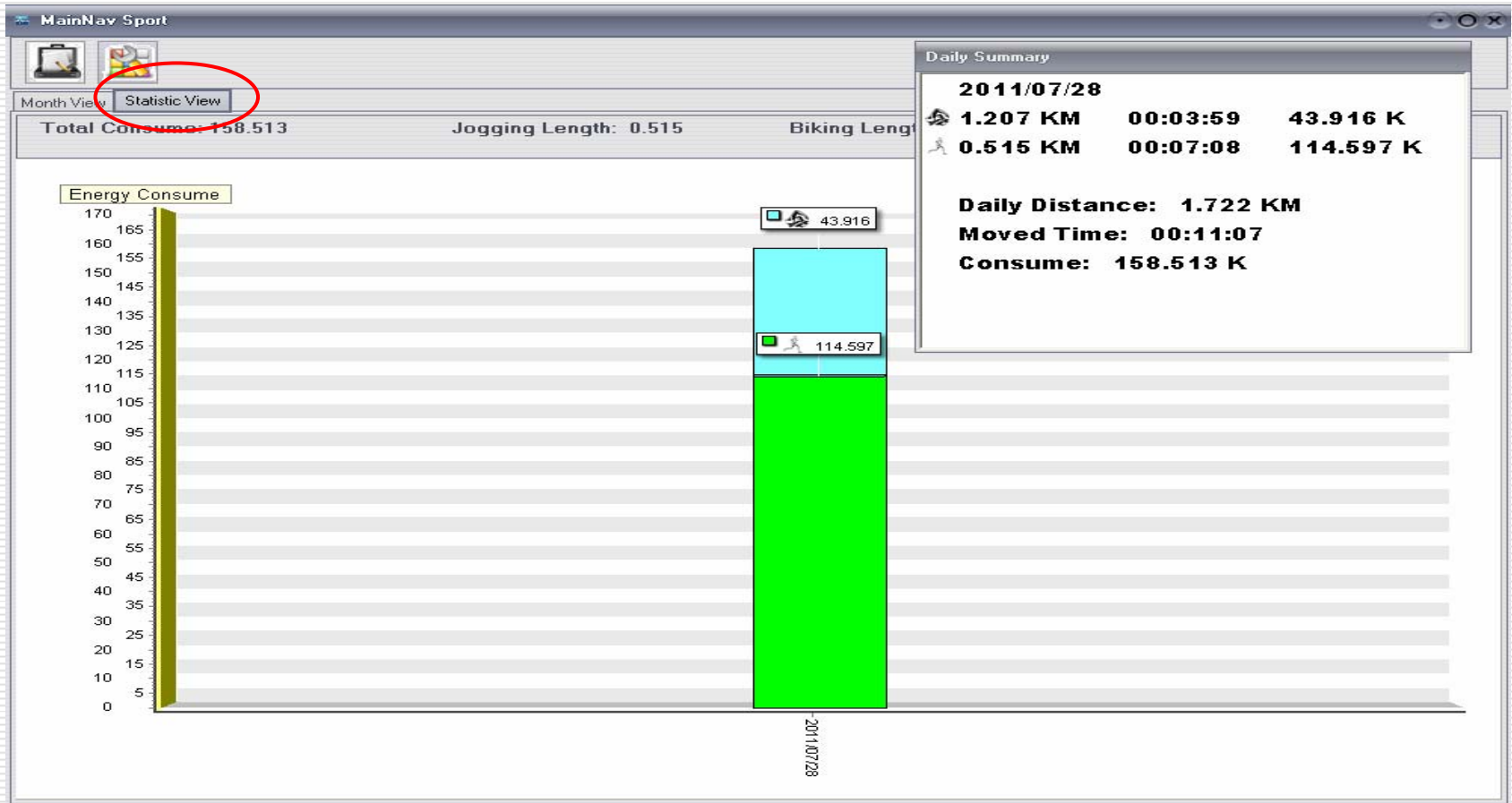
1.207 KM
0.515 KM

If personal parameter change, software will calculate new sport record base on new parameter

The screenshot displays a software interface for sports management. At the top, there are icons for a calendar and a statistics chart. Below these are tabs for 'Month View' and 'Statistic View'. A summary bar shows 'Daily Distance: 1.722', 'Moved Time: 00:11:07', and 'Consume: 158.513'. The main area is a calendar for July 2011, with days of the week in Chinese (星期日, 星期一, 星期二, 星期三) and dates from 3 to 31. A 'Physical' dialog box is open, allowing users to update personal parameters: Body Weight (90), Gender (Male), Age (30), and Bike Weight (10). A 'Daily Summary' panel on the right shows data for 2011/07/28, including cycling and running distances and times. A red arrow points from the 'Statistic View' tab to the 'Physical' dialog box, indicating that parameter changes affect the statistics.

Day	Distance (KM)	Time	Consume (K)
2011/07/28 (Cycling)	1.207	00:03:59	43.916
2011/07/28 (Running)	0.515	00:07:08	114.597
Daily Total	1.722	00:11:07	158.513

Calories consumption chart



Analyze daily sport

